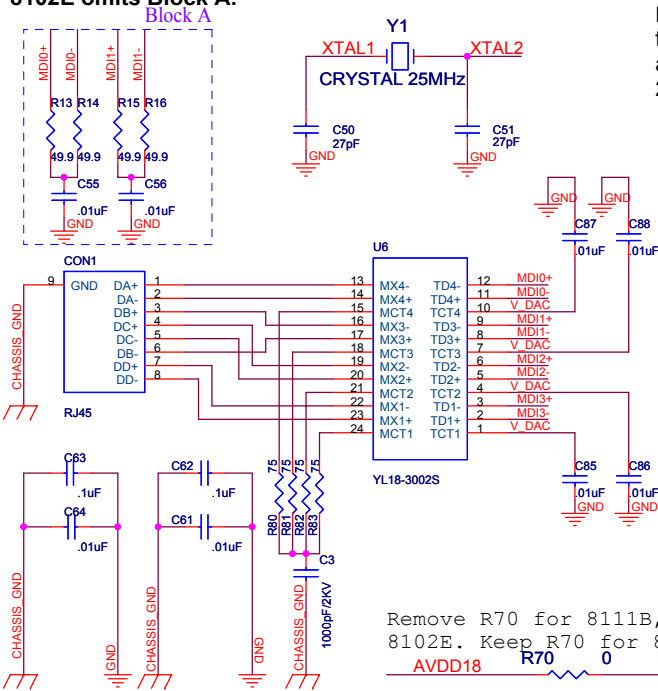
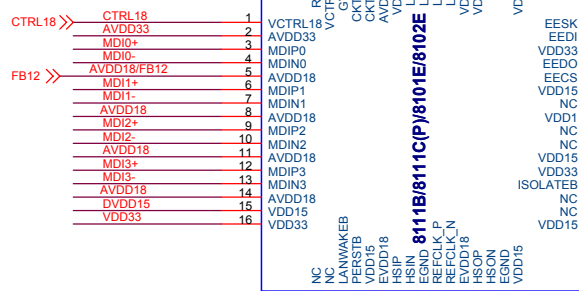


Block A is only used in the RTL8101E circuitry. For RTL8111B, RTL8111C(P) and 8102E omits Block A.



RTL8111B/8101E circuit removes R68. R68 is only used for RTL8111C(P) application. Keep R68 and remove C47/C48 to enable Switching regulator. Remove R68, C48 and change C47 to 0 ohm to disable switching regulator. Refer to power&surrounding-8111C for further details. For RTL8102E remove R68, C47 and C48.

R21 value should be 2.49K (1%) for 8111B/8111C/8102E application. R21 should be 2.0K(1%) for 8101E application



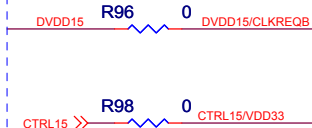
Only 8111CP has SMCLK and SMDATA pins (Pin 17 Pin 18). Refer to Page 2.

Remove R70 for 8111B, 8111C(P) and 8102E. Keep R70 for 8101E.

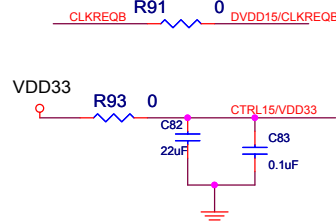
For RTL8102E, use this block

For RTL8102E use R95, R91 and R98 and remove R96, R90, R93, C82, and C83.

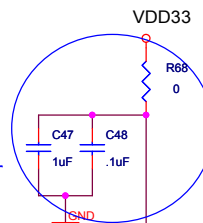
For RTL8111B/8101E, use this block



For RTL8111C, use this block.

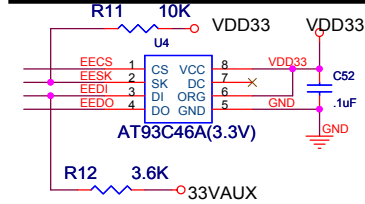


*The CLKREQB is an active low signal driven by the PCI Express Mini Card function to request the clock to be available. If this function is not supported, leave this signal floating or connect to ground.

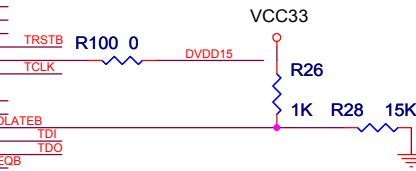


R22 should be placed close to RTL8111B/8111C for test purpose. RTL8101E/8102E don't need R22.

Only is R11 used when 93C56 is used. NC if 93C46 is used.



Remove R100 for RTL8111C application. Keep R100 for RTL8111B/8101E application. Remove R100 for RTL8111CP/RTL8102E application and connect Pin 41 to JTAG's TMS pin.



Pin 34, 35, 40, 41, 42 are JTAG pins in RTL8111CP. Please refer to each product's datasheet for the correct pin names.

Reference Transformer Part No. list YL18-3002S YuTai Electronics Co.,LTD TEL:86-574-63620701,63621610 http://www.yutai-elec.com EMAIL: nico_yu@yeah.net